

The current Surge Risk is assessed as **Mid Amber**



**SUMMARY**

It's official, the first part of 2011 has been very dry. According to the Met Office, Spring rainfall was below normal over almost the whole UK, the exception being western Scotland where May was very wet. Spring was particularly dry over the eastern half of England, where less than a third of the normal amount fell. Across much of East Anglia, only about 20% of average was recorded. Across England and Wales it was the equal-driest Spring since 1910, with conditions very similar to Spring 1990.



Met Office rainfall figures for the south of the country show just how dry it has been.

REGION	This Month To Date (Jun)		Last Month (May)		Last 3 Months		Last 6 Months	
	Total Rainfall (mm)	% LTA	Total Rainfall (mm)	% LTA	Total Rainfall (mm)	% LTA	Total Rainfall (mm)	% LTA
Midlands	4	6	50	86	66	39	200	67
Anglian	7	14	21	43	31	22	152	64
South East	16	30	28	51	47	28	231	76
South West	7	11	42	63	79	37	310	68

Figures courtesy of Met Office

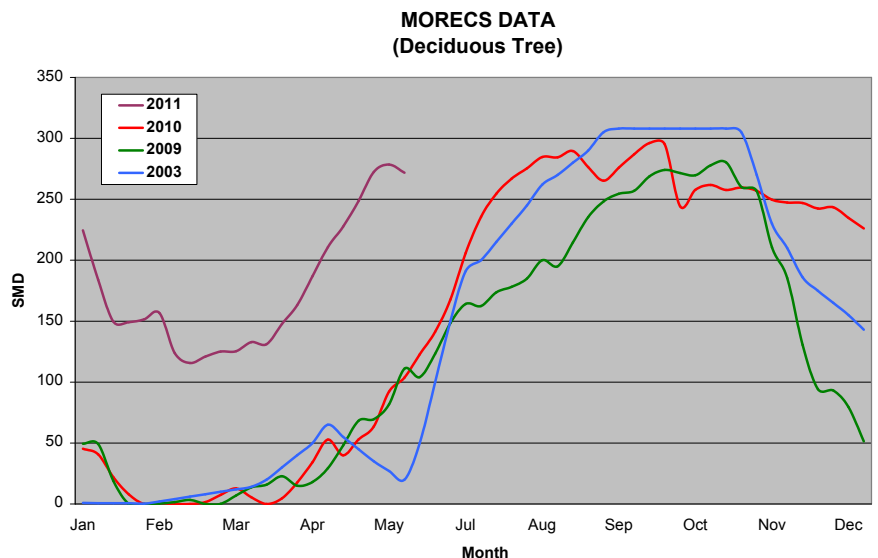
LTA = Long Term Average 1961 - 1990

As a result, the Environment Agency has announced that Lincolnshire, Cambridgeshire, parts of Bedfordshire and Northamptonshire and western Norfolk are now in official Drought Status. Restrictions on agricultural use of water will follow. However, the Agency notes that although some water company reservoir levels are now below normal for this time of year, none has yet imposed any hosepipe restrictions anywhere in England and Wales. Severn Trent has sounded a warning that that there is an increasing likelihood of water restrictions in some parts of their region, unless we see a return to seasonal average rainfall within the near future.

Our previous Bulletin showed the MORECS plot rising quite to the highest April level since the mid 1990's. This trend continued through May and it is only with the unsettled weather over the last week or so that we have seen a reversal. The heavy thundery showers meant south east England received 30 per cent of its average monthly rainfall in just one week.

Soil Moisture Deficits are now at the level we would expect to see in Summer but two to three months early. As we have noted

previously, Surge is triggered by exceptional Summer conditions when trees are in full leaf – if the current unsettled weather continues through July and August and into September then we are likely to see some uplift in normal claim numbers but not a full-blown Surge. However, the dry Spring has

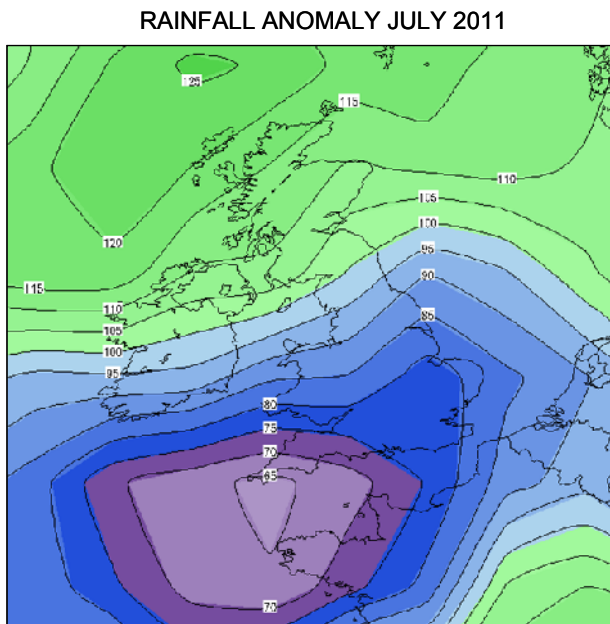


effectively primed the situation for a surge should there be a sustained hot dry spell in early or mid Summer.

**WEATHER FORECAST**

No change in the current unsettled conditions is predicted by the Met Office in the short to medium term: *“Staying unsettled for the rest of the period, possibly drier and slightly warmer in the southeast. For early July, in southern and southeastern areas temperatures should generally vary around average, with sunshine amounts normal for the time of year. Rainfall will probably be less than average in these areas.”*

This is the theme for the majority of forecasts through the early and mid part of the Summer:

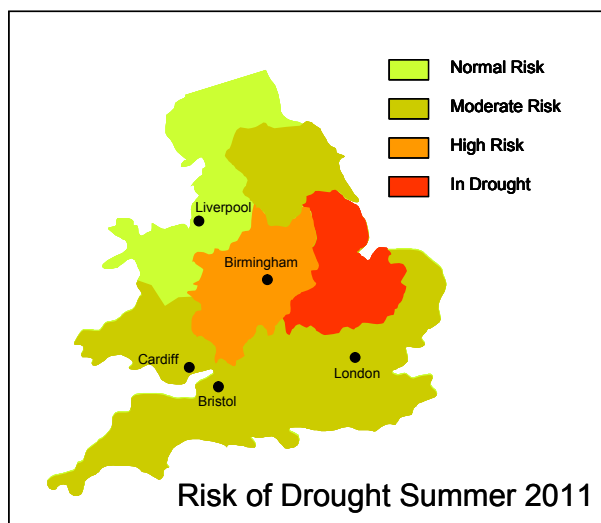


courtesy of netweather

Positive Weather Solutions say for July - *“As a result of high pressure looking likely to remain entrenched over mainland Europe July appears to offer a fairly consolidated weather pattern, with the South especially experiencing some summery conditions . . . perfect conditions for sporadic localised storms and more organised thundery downpours. Temperatures overall will be above average for most; rainfall looks set to be around the norm, perhaps wetter in some northern areas”.*

In August, *“. . . owing to a more unsettled regime overall this could be the least promising segment of summer for some, with a greater tendency towards cooler, changeable interludes with ample cloud amounts and bright passages alternating with showery weather. Overall, temperatures and rainfall are both likely to be around the long-term norm”.*

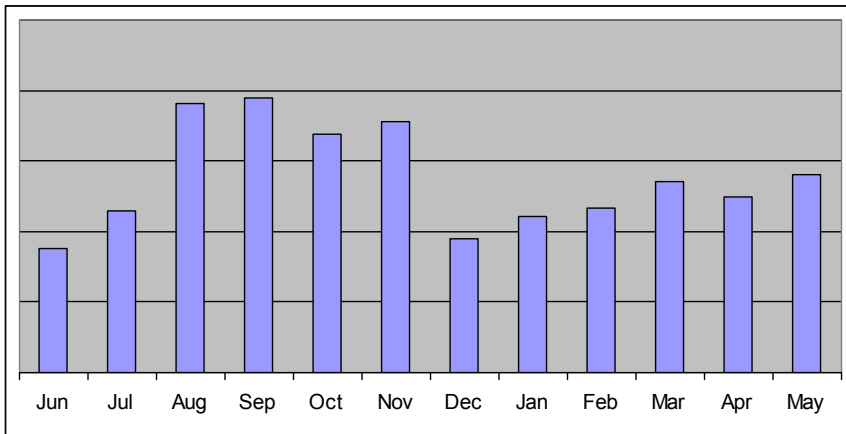
According to WeatherOnline for mid to late July: *“No indication that summer is about to descend upon us, for if the pattern is correct then a continuation of rather mixed, showery, rainy and coolish conditions are likely to dominate across all areas, low pressure and its associated 'unsettledness' persisting”.*



Netweather however, were headlining **“Hot & Dry Summer expected with similarities to 1976”**

In their Drought Management Briefing dated 09 June 2011, the Environment Agency offered this assessment of the Summer to come. The risk of drought is classified according to the combination of impacts on water resources, agriculture, wildlife and water supplies.

**INCOMING CLAIMS PROFILE**



Once again the continuing effect of the dry Spring weather on claims intake can be seen in the rolling twelve month plot. On the basis of the predicted weather patterns over the coming months we anticipate that the upward trend will continue as we progress through the Subsidence season.

**We assess the current Surge Risk to be Mid Amber, slightly increased on last month.**

This bulletin is being issued on a monthly basis. If prevailing weather conditions vary significantly from that predicted such that the surge risk assessment changes, interim bulletins will be issued more frequently.